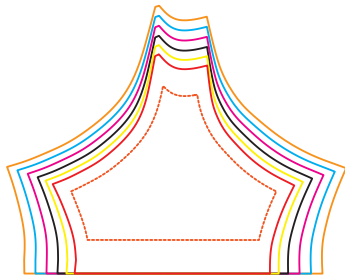


Atac logo will move down as sizes get larger



Right Sleeve

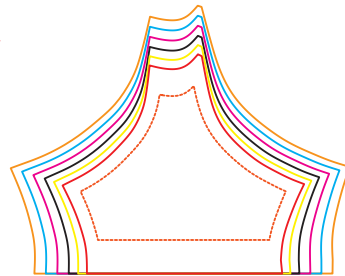


Back



Collar

Left Sleeve



**Colours: \***



Pantone



Pantone



Black



White

**Size Key:**

3 Extra Large

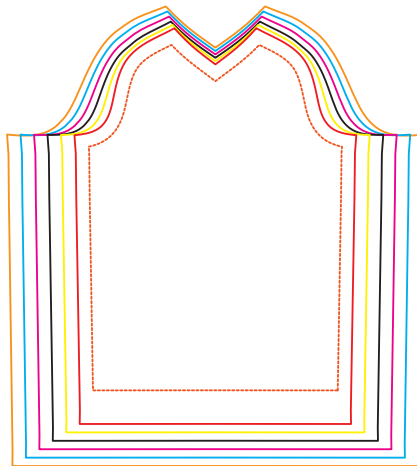
2 Extra Large

Extra Large

Large

Medium

Small



Front



**ATAC**  
SPORTSWEAR  
www.atacsportswear.com  
Email: art@atacsportswear.com  
Fax: 1-888-827-3483

Company:
Important information:

Please read the Atac Artwork Specs Available here:  
[http://www.bikeatac.com/ordering/artwork\\_specs.html](http://www.bikeatac.com/ordering/artwork_specs.html)

Keep logos within the red dotted line (the red dotted line is the logo "safe-zone" and the background artwork needs to cover your complete size range.

All artwork needs to be in vector

All artwork should be in pantone colors. The full Atac Palette is available here:  
<http://www.bikeatac.com/ordering/colorchart.htm>

Pantone colors not on the chart are available but there is a one time artwork charge of \$75 per color

Atac logo placement is standard - please contact your Sales rep if you have any questions about the Atac logos

If you require any assistance setting up your artwork please email the art department at: [atacartwork@gmail.com](mailto:atacartwork@gmail.com)