

Back

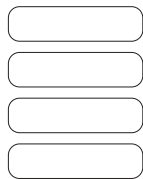


Collar



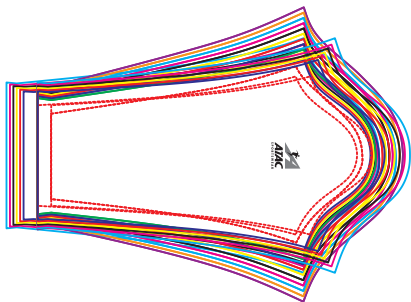
Front

Colours: *

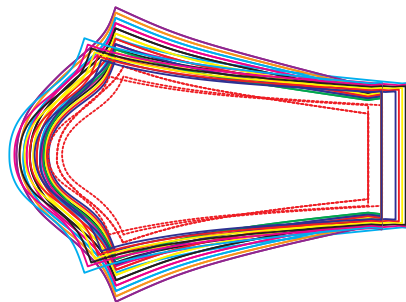


- Colour 1
- Colour 2
- Colour 3
- Colour 4

Right Sleeve



Left Sleeve



www.atacsportswear.com
Email: art@atacsportswear.com
Fax: 1-888-827-3483

Company:
Important information:

Male
 Size Key:
 4 Extra Large
 3 Extra Large
 2 Extra Large
 Extra Large
 Large
 Medium
 Small
 Extra Small
 2 Extra Small

Female
 Size Key:
 2 Extra Large
 Extra Large
 Large
 Medium
 Small
 Extra Small

Please read the Atac Artwork Specs Available here:
http://www.bikeatac.com/ordering/artwork_specs.html

Keep logos within the red dotted line (the red dotted line is the logo "safe-zone" and the background artwork needs to cover your complete size range.

All artwork needs to be in vector

All artwork should be in pantone colors. The full Atac Palette is available here:
<http://www.bikeatac.com/ordering/colorchart.htm>
 Pantone colors not on the chart are available but there is a one time artwork charge of \$75 per color

Atac logo placement is standard - please contact your Sales rep if you have any questions about the Atac logos

If you require any assistance setting up your artwork please email the art department at: art@atacsportswear.com